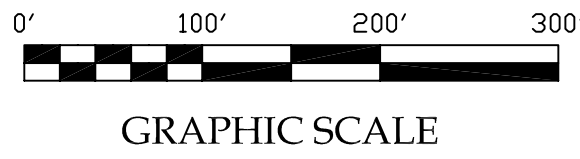
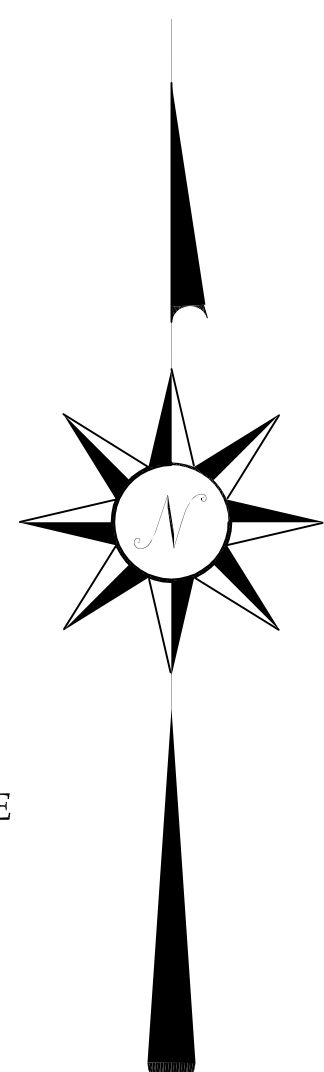
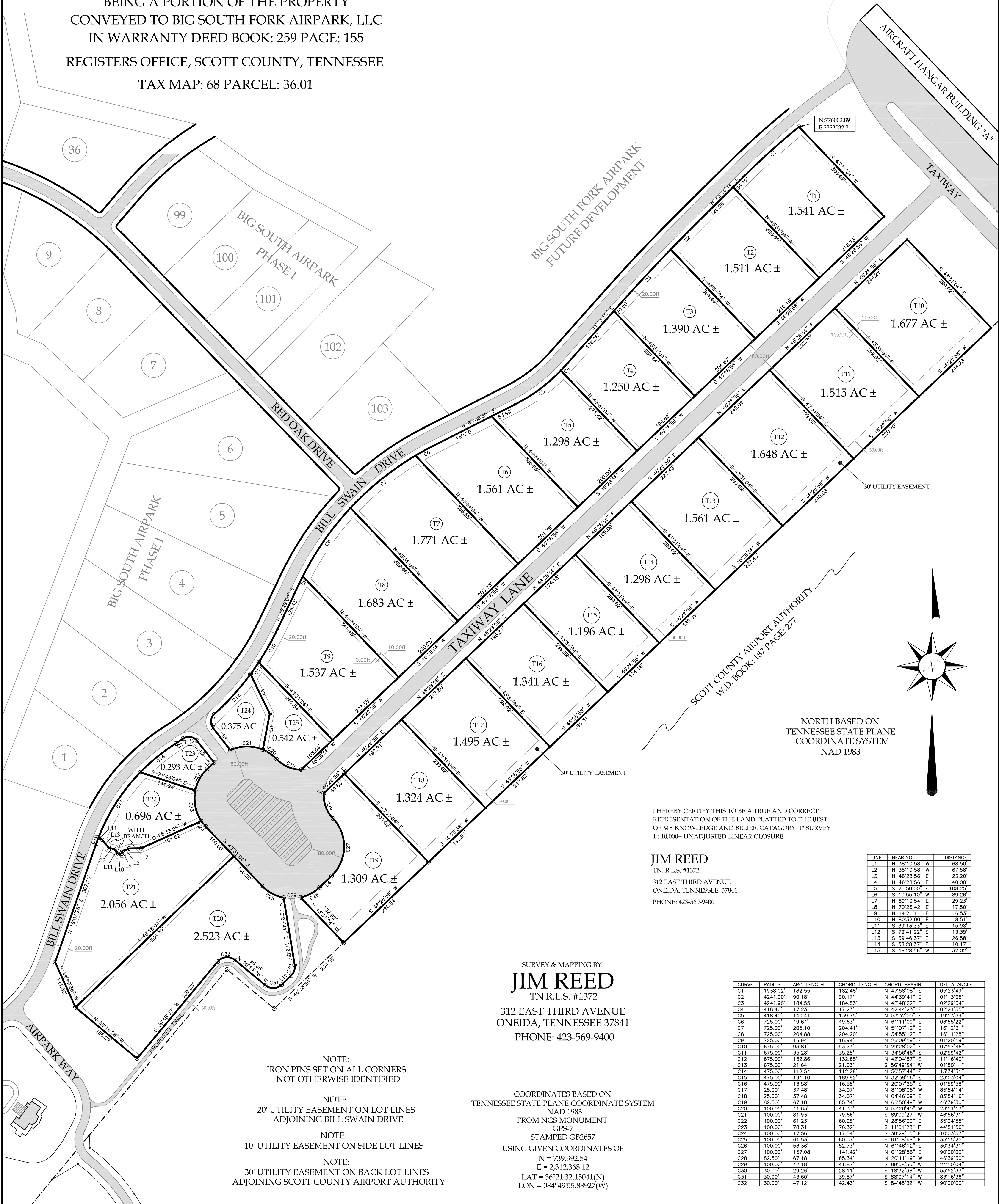


SURVEY FOR
BIG SOUTH FORK AIRPARK, LLC
 PHASE II - TAXIWAY LOTS
BIG SOUTH FORK AIRPARK
 FOURTH CIVIL DISTRICT
 SCOTT COUNTY, TENNESSEE

DATE: AUGUST 27, 2009



BEING A PORTION OF THE PROPERTY
 CONVEYED TO BIG SOUTH FORK AIRPARK, LLC
 IN WARRANTY DEED BOOK: 259 PAGE: 155
 REGISTERS OFFICE, SCOTT COUNTY, TENNESSEE
 TAX MAP: 68 PARCEL: 36.01



I HEREBY CERTIFY THIS TO BE A TRUE AND CORRECT REPRESENTATION OF THE LAND PLATTED TO THE BEST OF MY KNOWLEDGE AND BELIEF. CATEGORY "T" SURVEY 1: 10,000+ UNADJUSTED LINEAR CLOSURE.

JIM REED
 TN. R.L.S. #1372
 312 EAST THIRD AVENUE
 ONEIDA, TENNESSEE 37841
 PHONE: 423-569-9400

LINE	BEARING	DISTANCE
L1	N 38°10'58" W	68.50'
L2	N 38°10'58" W	67.58'
L3	N 46°28'56" E	23.20'
L4	N 46°28'56" E	40.00'
L5	S 25°50'00" E	108.25'
L6	S 10°55'10" W	89.26'
L7	N 44°44'31" E	29.23'
L8	N 70°26'42" E	17.50'
L9	N 14°21'11" E	6.53'
L10	N 60°32'00" E	8.51'
L11	S 89°13'33" W	15.98'
L12	S 79°41'22" E	13.35'
L13	S 38°46'37" E	26.58'
L14	S 58°28'37" E	10.17'
L15	S 46°28'56" W	32.02'

SURVEY & MAPPING BY
JIM REED
 TN. R.L.S. #1372
 312 EAST THIRD AVENUE
 ONEIDA, TENNESSEE 37841
 PHONE: 423-569-9400

CURVE	RADIUS	ARC LENGTH	CHORD LENGTH	CHORD BEARING	DELTA ANGLE
C1	1938.02'	182.55'	182.48'	N 47°58'08" E	05°23'49"
C2	4241.90'	90.18'	90.17'	N 44°39'41" E	01°13'05"
C3	4241.90'	184.55'	184.53'	N 42°48'22" E	02°23'34"
C4	418.40'	17.23'	17.23'	N 42°44'31" E	02°21'35"
C5	418.40'	140.41'	139.75'	N 53°32'00" E	19°13'39"
C6	725.00'	49.64'	49.63'	N 61°11'09" E	03°55'22"
C7	725.00'	205.10'	204.41'	N 51°07'12" E	16°12'31"
C8	725.00'	204.88'	204.20'	N 44°51'12" E	16°11'28"
C9	725.00'	16.94'	16.94'	N 26°09'19" E	01°20'19"
C10	675.00'	93.81'	93.73'	N 29°28'02" E	07°57'46"
C11	675.00'	35.28'	35.28'	N 54°56'46" E	02°59'40"
C12	675.00'	132.86'	132.65'	N 42°04'57" E	11°16'40"
C13	675.00'	21.64'	21.63'	S 56°49'54" W	01°50'11"
C14	475.00'	112.54'	112.28'	N 50°57'44" E	13°34'31"
C15	475.00'	191.10'	189.82'	N 32°38'56" E	23°03'04"
C16	475.00'	16.58'	16.58'	N 20°07'25" E	01°59'58"
C17	25.00'	37.48'	34.07'	N 81°08'05" W	85°54'14"
C18	25.00'	37.48'	34.07'	N 04°46'09" E	85°54'16"
C19	82.50'	67.18'	65.34'	N 65°04'39" W	46°39'30"
C20	100.00'	41.63'	41.33'	N 55°26'40" W	23°51'13"
C21	100.00'	81.93'	79.66'	S 89°09'27" W	46°56'31"
C22	100.00'	61.23'	60.28'	N 28°56'29" E	35°04'55"
C23	100.00'	78.31'	76.32'	S 11°01'28" E	44°51'56"
C24	100.00'	17.56'	17.54'	S 38°29'15" E	10°03'37"
C25	100.00'	61.53'	60.57'	S 61°08'46" E	35°18'25"
C26	100.00'	53.36'	52.73'	N 61°46'12" E	30°34'31"
C27	100.00'	157.08'	141.42'	N 02°28'56" E	90°00'00"
C28	82.50'	67.18'	65.34'	N 20°11'19" W	46°39'30"
C29	100.00'	42.18'	41.87'	S 89°08'30" W	24°10'04"
C30	30.00'	29.26'	28.11'	S 18°32'38" W	55°52'37"
C31	30.00'	43.60'	39.87'	S 80°07'14" W	83°16'56"
C32	30.00'	47.12'	42.43'	S 84°45'32" W	90°00'00"

NOTE:
 IRON PINS SET ON ALL CORNERS
 NOT OTHERWISE IDENTIFIED

NOTE:
 20' UTILITY EASEMENT ON LOT LINES
 ADJOINING BILL SWAIN DRIVE

NOTE:
 10' UTILITY EASEMENT ON SIDE LOT LINES

NOTE:
 30' UTILITY EASEMENT ON BACK LOT LINES
 ADJOINING SCOTT COUNTY AIRPORT AUTHORITY

COORDINATES BASED ON
 TENNESSEE STATE PLANE COORDINATE SYSTEM
 NAD 1983
 FROM NGS MONUMENT
 GPS-7
 STAMPED GB2657
 USING GIVEN COORDINATES OF
 N = 739,392.54
 E = 2,312,368.12
 LAT = 36°21'32.15041(N)
 LON = 084°49'55.88927(W)